



WEBSITE: [www.belfastNY.com](http://www.belfastNY.com)

Links to Allegany County website in support of “Wilds” initiative.

*“Situated along the upper Genesee River and bordering Pennsylvania to the South, the Western NY Wilds are a welcome retreat in the wilderness. Here we believe that communing with nature brings out the best of our human nature. Whether you are seeking to nourish creativity, find adventure, or just enjoy peace and quiet, we invite you to **Live Deliberately** with us on your next visit.”*



---

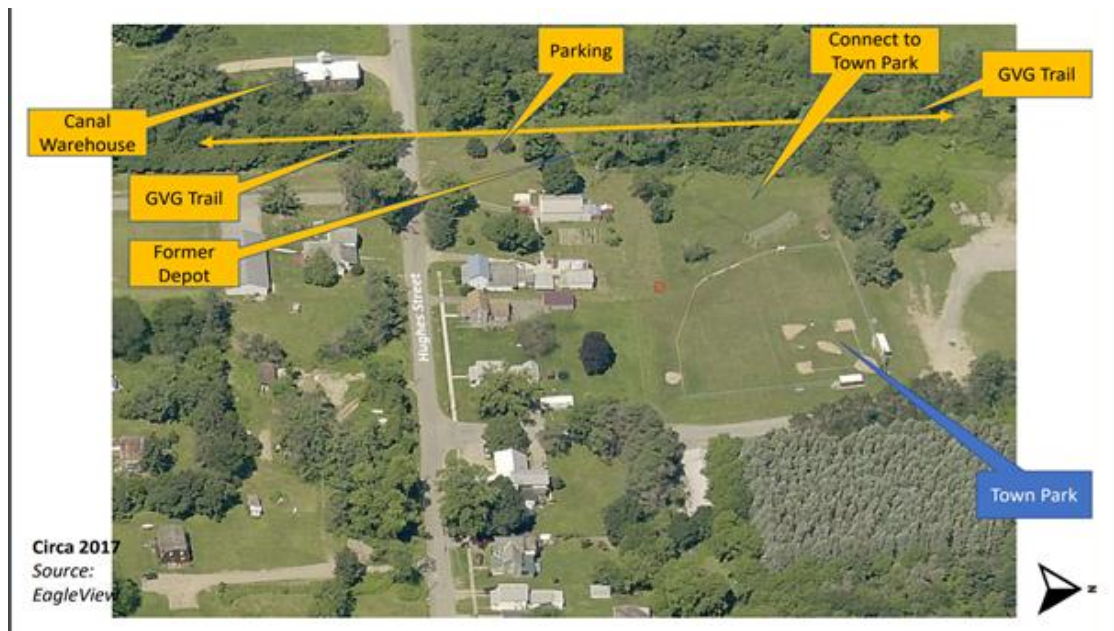
RURAL ECONOMIC DEVELOPMENT: regional tourism and outdoor recreation (eco-tourism; agri-tourism)

---

State and Regional Examples of funding:

- 2017, NY appropriates \$200 million for Empire State Trail (750 mile trail with a Greenway connector) – completion pending.
- Senate Bill S4416B initiates strategic trails plan Requires the office of parks, recreation and historic preservation to create a plan regarding non-motorized multi-use trails – signed by Governor, 2020.
- 2019, \$4 million to provide connections to Empire Trail; \$2.5 million dedicated for improvements in southern area trails (grant award + state funding).
- Gateway Villages; initiative for trail access/hospitality points to Letchworth State Park (LSP). Launched in 2017 (i.e., at that time Perry received \$77,900.00 grant for initiative)
- The Friends of the Genesee Valley Greenway, Inc. (FOGVG) has been awarded a \$42,000 design and access grant to support Cuba Public Access Project (July, 2020). Cuba is seeking “official” Trail Town AND LSP Gateway status.
  - Several access points from Rochester to LSP have been funded last few years
  - Belfast is in prime area for route between Cuba and LSP
- The Allegany County Office of Planning has been awarded a \$50,000 design and access grant to be used for route planning and easement research to determine feasibility to link a 20-mile missing connection between the WAG trail in Wellsville and the Genesee Valley Greenway trail in Belfast. This is a very important missing link to a larger 230-mile trail system, the Triple Divide Trail, connecting users from Lake Ontario down to the Susquehanna River in Williamsport, PA.
- Genesee River Wilds, “Blue-Trail”

In what ways are the Town willing or able to help Belfast be a part of the “Wilds” conversation?



#### HUGHES STREET CORRIDOR:

